

B. 14 n° 6

(B. 14 N 62)

(n° 62)

Sonata

A. Due Violini e Basso

Del Sig.^o Carlo Antonio

A. C. X.

— Campion —

Basso



Pastorale

And. sostenuto

Allegro

B. 14 n° 6

Violino Primo



Pastorale

And. sostenuto

A handwritten musical score for a piece titled "Pastorale". The score is written on ten staves. The first staff begins with the tempo marking "And. sostenuto" and a key signature of one sharp (F#). The music is primarily in a 6/8 time signature. The notation includes various rhythmic values such as eighth and sixteenth notes, as well as rests. There are several dynamic markings, including "p" (piano) and "f" (forte). The score concludes with a tempo change to "Allegro" and a key signature change to two sharps (F# and C#). The final section features more complex rhythmic patterns, including triplets and sixteenth-note runs.

A page of handwritten musical notation on ten staves. The notation is dense and complex, featuring a variety of rhythmic values, including sixteenth and thirty-second notes, as well as rests and accidentals. The manuscript is written in dark ink on aged, slightly yellowed paper. The staves are connected by a single vertical line on the left. The notation includes many beamed notes, suggesting a fast or intricate piece. There are some markings above the staves, possibly indicating fingerings or breath marks. The overall appearance is that of a historical musical manuscript.



A handwritten musical score consisting of six staves. The notation is in a treble clef with a key signature of one sharp (F#) and a time signature of 6/8. The music is written in a cursive, historical style. The first five staves contain a continuous melodic line with various rhythmic values, including eighth and sixteenth notes, and rests. The sixth staff begins with a few notes and then concludes with a double bar line and a decorative flourish.

Fine ~

B. 14 n° 6

Violino Secondo



Pastorale

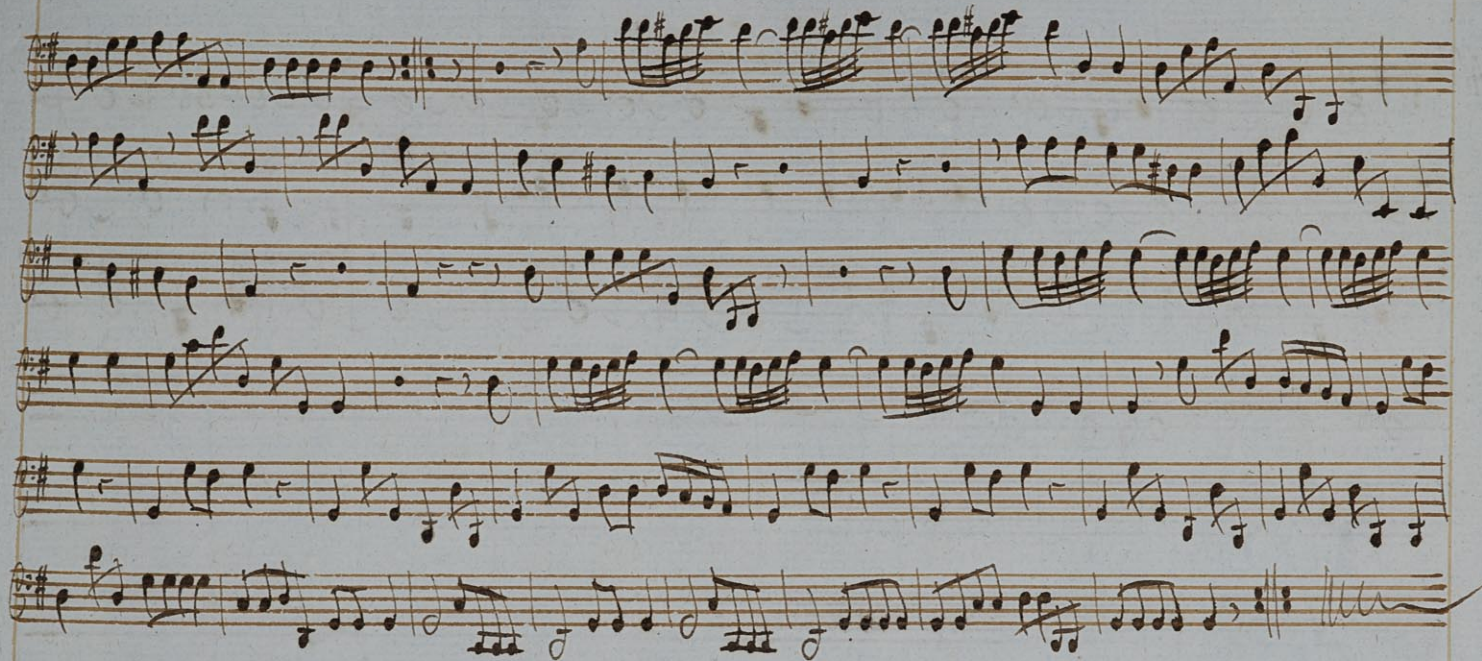
And. Sostenuto

A handwritten musical score on aged paper, consisting of ten staves. The title 'Pastorale' is written in cursive at the top left. Below it, the tempo marking 'And. Sostenuto' is written. The music is in G major (one sharp) and 6/8 time. The first nine staves feature a melodic line in the upper voice and a bass line in the lower voice, with various rhythmic patterns including eighth and sixteenth notes. The tenth staff begins with a tempo change to 'Allegro' and features a more complex, rhythmic texture with many sixteenth notes. The handwriting is clear and consistent throughout the page.

A handwritten musical score consisting of ten staves. The notation is dense and includes various rhythmic values, accidentals, and dynamic markings. The paper is aged and shows some staining. At the bottom of the page, there is a handwritten signature or initials: *V: S: V: S:*



A handwritten musical score on five staves. The notation is in brown ink on aged, slightly yellowed paper. The first staff begins with a treble clef, a key signature of one sharp (F#), and a 3/8 time signature. The music consists of a series of eighth and sixteenth notes, often beamed together. The second staff continues the melody with similar rhythmic patterns. The third and fourth staves provide accompaniment with chords and single notes. The fifth staff concludes the piece with a double bar line and the word "Fine" written in a decorative, cursive hand. Below the fifth staff, there are four additional empty staves, each consisting of five horizontal lines.



All.^o

Handwritten musical score on four staves. The first staff is in treble clef with a key signature of one sharp (F#) and a 6/8 time signature. The second and third staves are in bass clef with the same key signature. The fourth staff is in bass clef with the same key signature. The music consists of rhythmic patterns of eighth and sixteenth notes. The fourth staff ends with a double bar line and a decorative flourish.

fine